

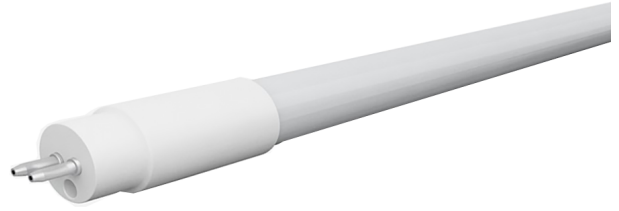
# LED T5 TUBE LIGHTS

## QUICK SEARCH: SC6846



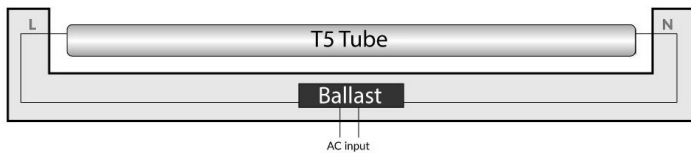
### FEATURES:

- Direct Replacement Option- for use on ELECTRONIC ONLY  
Instant Start and Rapid Start Ballasts
- Ballast Bypass Option requires bypass or removal of ballast
- Solid State LED lighting
- High efficacy
- Rated Life: 50,000 hours
- All glass tube
- Base: G13
- Beam Angle: 120°

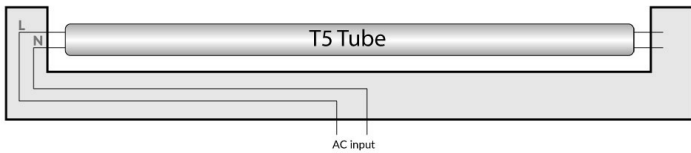


### INSTALLATION:

Ballast Compatible (2-Sided Wiring)

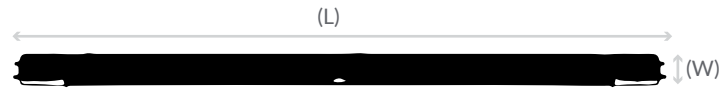


Bypass Ballast (1-Sided Wiring)



### DIMENSIONS:

47.2" (L) x 1" (W)



### WARRANTY & LISTINGS:

- 5-year warranty
- DLC Qualified
- UL Listed

### ELECTRICAL:

- Voltage: 120-277V
- 50/60Hz AC
- Power factor: >0.90
- THD: <20%
- Efficacy: 120 LPW
- Non-Dimmable
- CRI: ≥80
- Operating Temperature: -13° F to 113° F

### SPECIFICATION:

Product Code	Wattage	Lumens	Color Temperature	Wiring
T5-EZ6-GS-4FT-15W-50K-F	15W	1800 Lumens	5000K Daylight	Universal Ballast Bypass and Compatible
T5-EZ6-GS-4FT-15W-50K-F	15W	1800 Lumens	4000K Cool White	Universal Ballast Bypass and Compatible
T5A440-25-G-SP-25-K	15W	1800 Lumens	4000K Cool White	Ballast Compatible